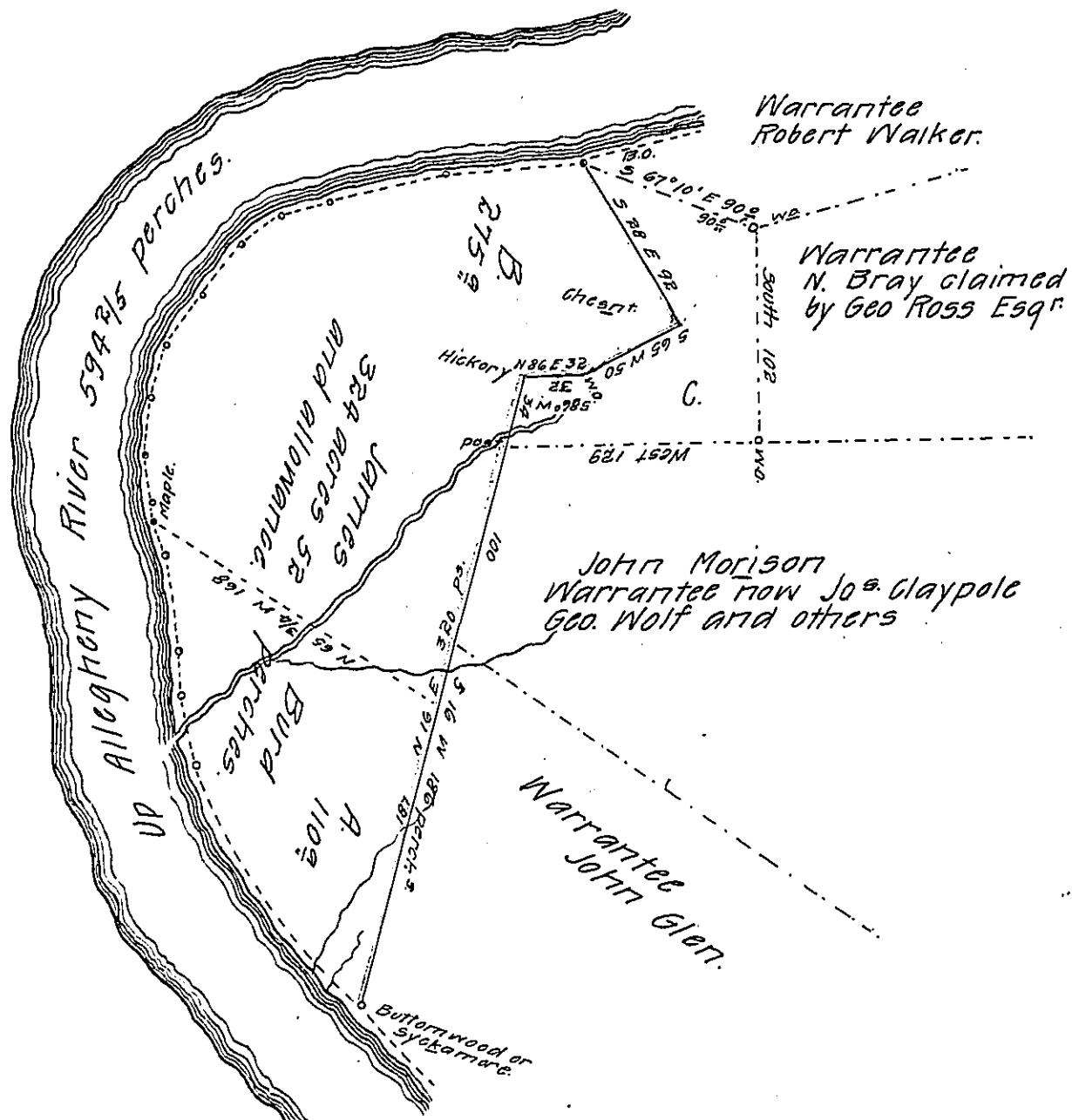


FORM No 1.

Courses and distances up  
Allegheny River viz.

- N 32° W 146 perches.
- N. 10 W 34 ditto
- North 23
- N. 7° W 48
- N. 19 W 21
- N. 11 W 5
- N. 2 W 22
- N. 6 E 28.
- N. 18 E 28
- N. 36 E 30
- N. 39 E 34
- N. 55 E 23
- N. 77 E 25
- N. 79 E 59 and
- N. 88 E 68 1/5
- Dist 594 1/5 perches.



In pursuance of a Contract made with the Board of Property dated the 19<sup>th</sup> of October 1827. Resurveyed the above described tract of land sometime since, containing three hundred and twenty four acres, fifty two perches and the allowance of six P. G. & Co. Situate in Allegheny township, Armstrong county, bounded by Allegheny river, lands surveyed to John Glen and others as represented by the Diagram, and is the same tract of land which was originally surveyed to James Burd in pursuance of an order dated the 3<sup>d</sup> of Apr<sup>l</sup> 1769 No. 2383, But that part of the same of which the situation and boundaries are represented by the figure including the letter A appears to have been afterwards surveyed to Samuel Cochran dated the 4<sup>th</sup> of Aug<sup>r</sup> 1804 and the figure including the letter B, represents the situation and boundaries of that part of the survey of James Burd which which was

IN TESTIMONY that the above is a copy of the original remaining on file in the Department of Internal Affairs of Pennsylvania, made conformably to an Act of Assembly approved the 16th day of February, 1833, I have hereunto set my Hand and caused the Seal of said Department to be affixed at Harrisburg, this twenty-eighth day of August 1908

*Nancy Howard*  
Secretary of Internal Affairs.